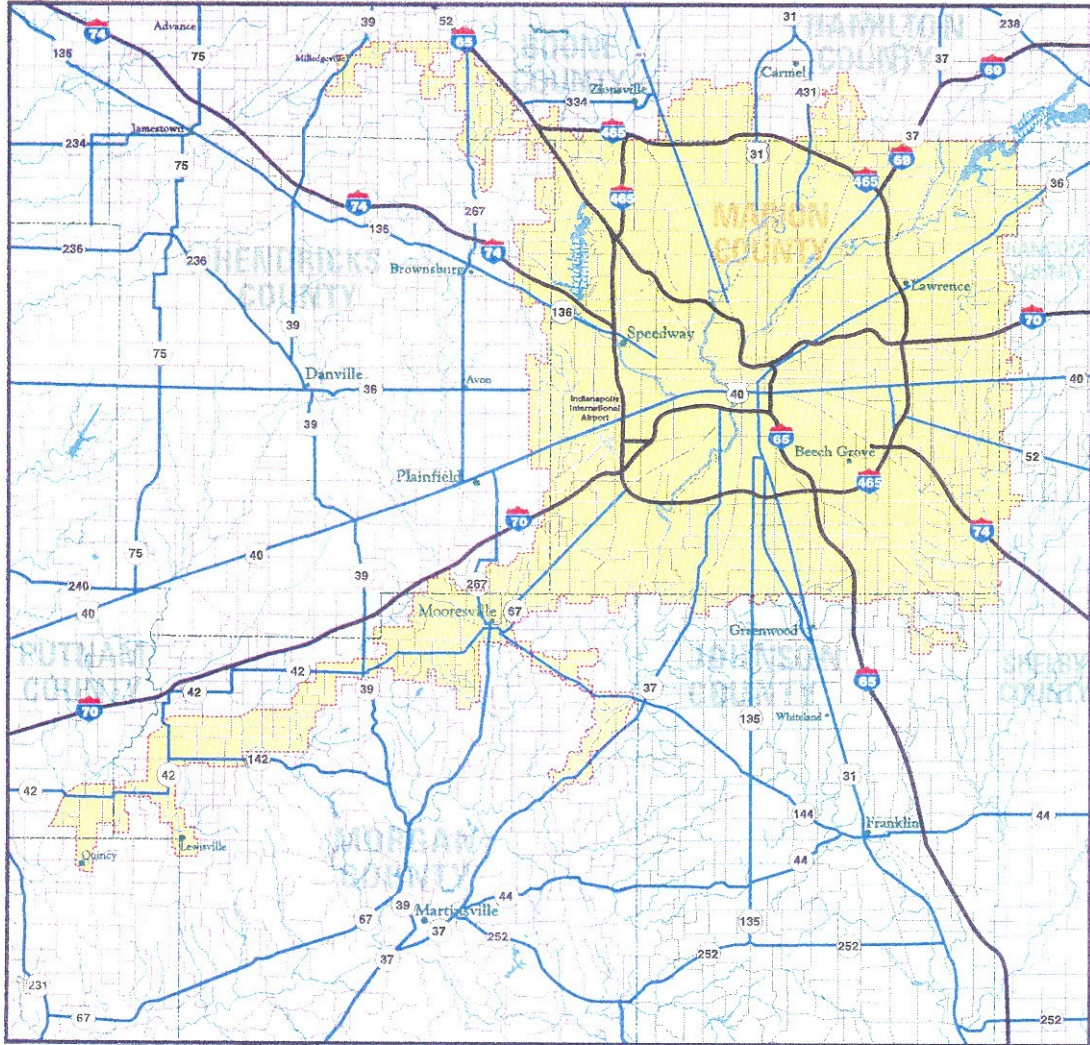
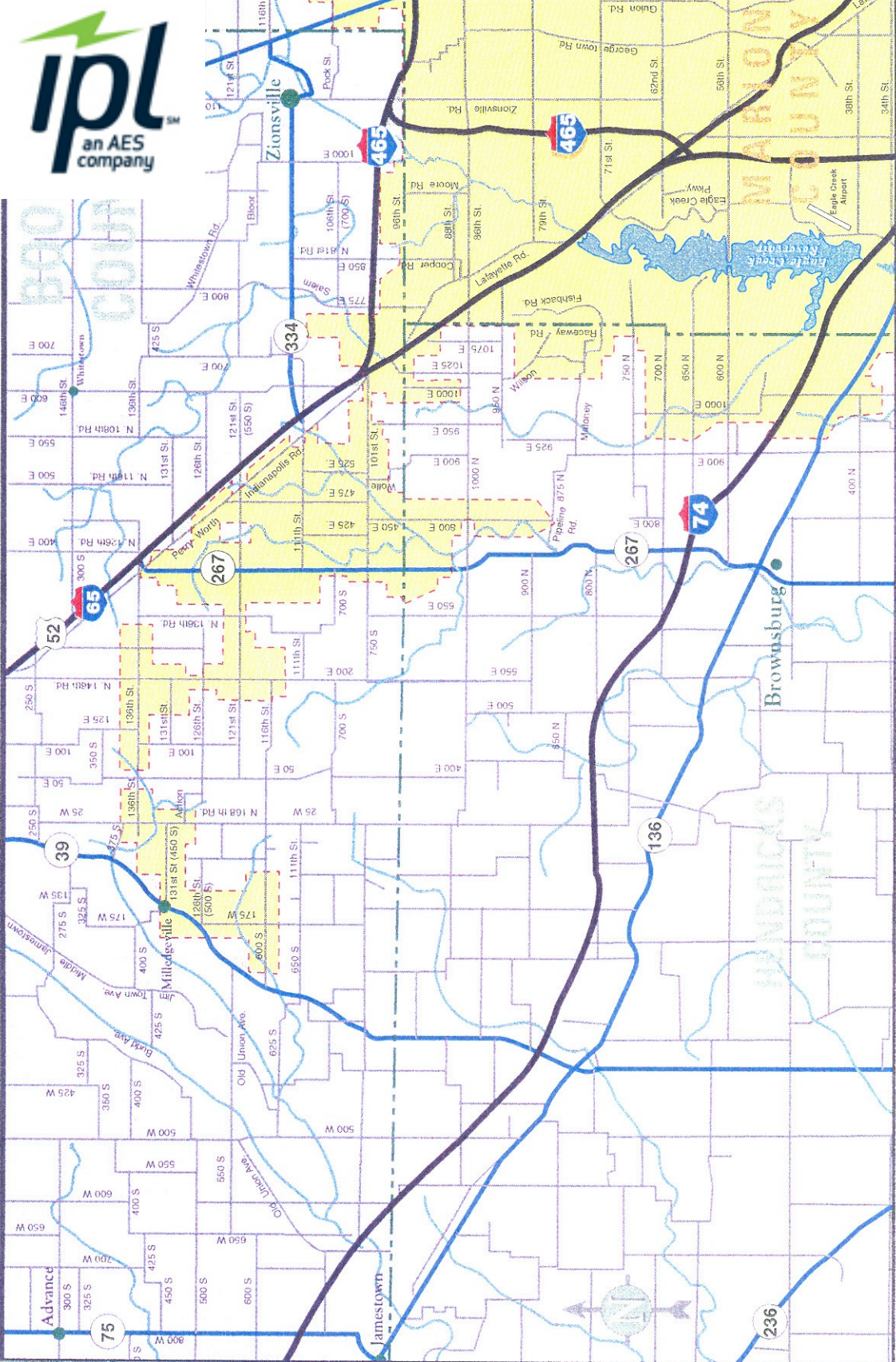


Service Territory Coverage Area



 Designates IPL Service Territory

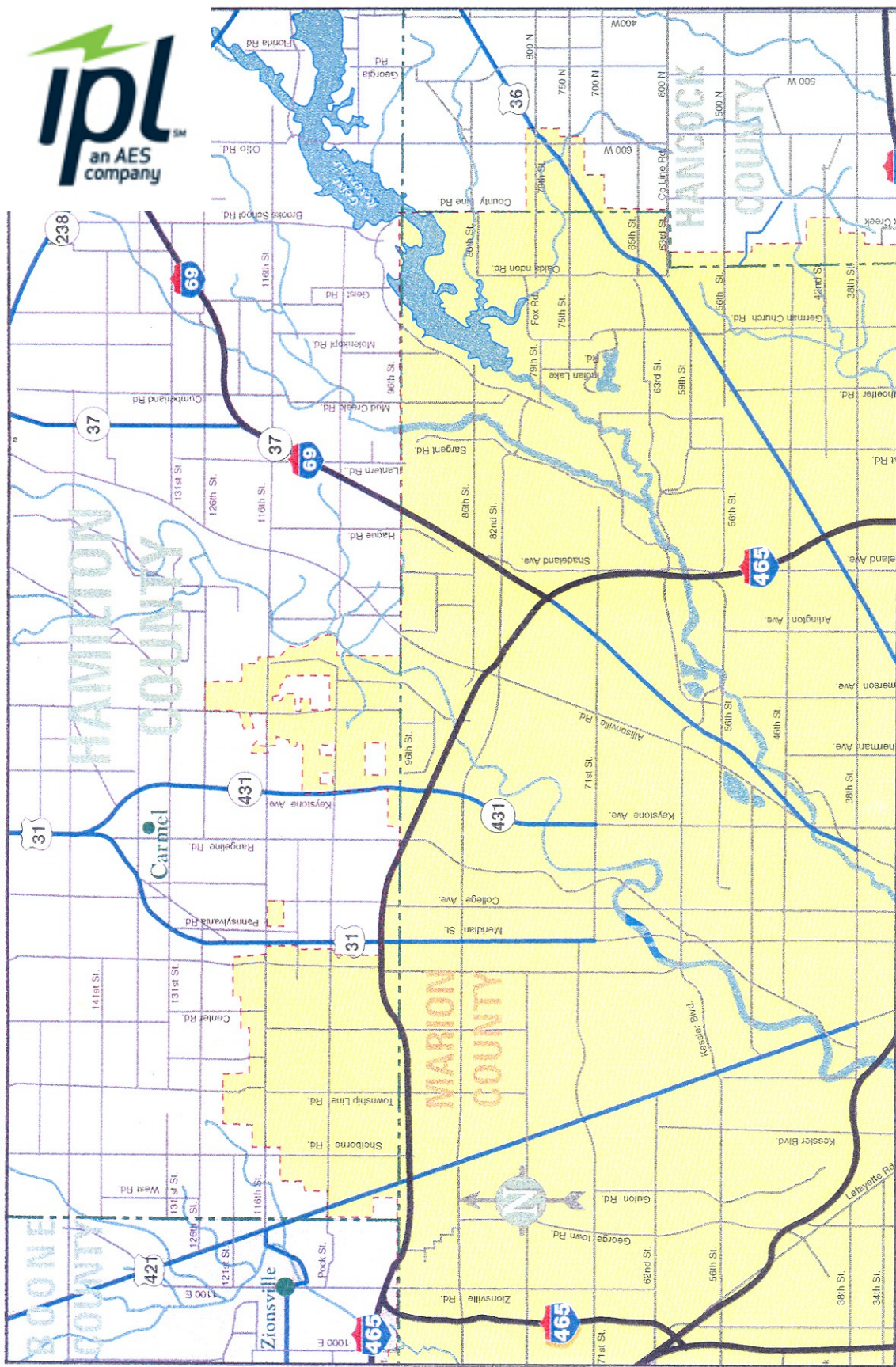
This material is furnished for General Information only. Any user of this material assumes complete responsibility for its use and agrees by such use to indemnify and defend Indianapolis Power & Light Company against any claims or other actions for damages that in any way may result from any use of this material. This material is for reference only and is licensed for a one time only use, to the company requesting the information for the specified project. Duplicating or partial copying of this electronic or paper material is strictly prohibited without written permission from Indianapolis Power & Light Co. and remains the sole property of said company. IPL material shall be returned to IPL upon request.



Boone County



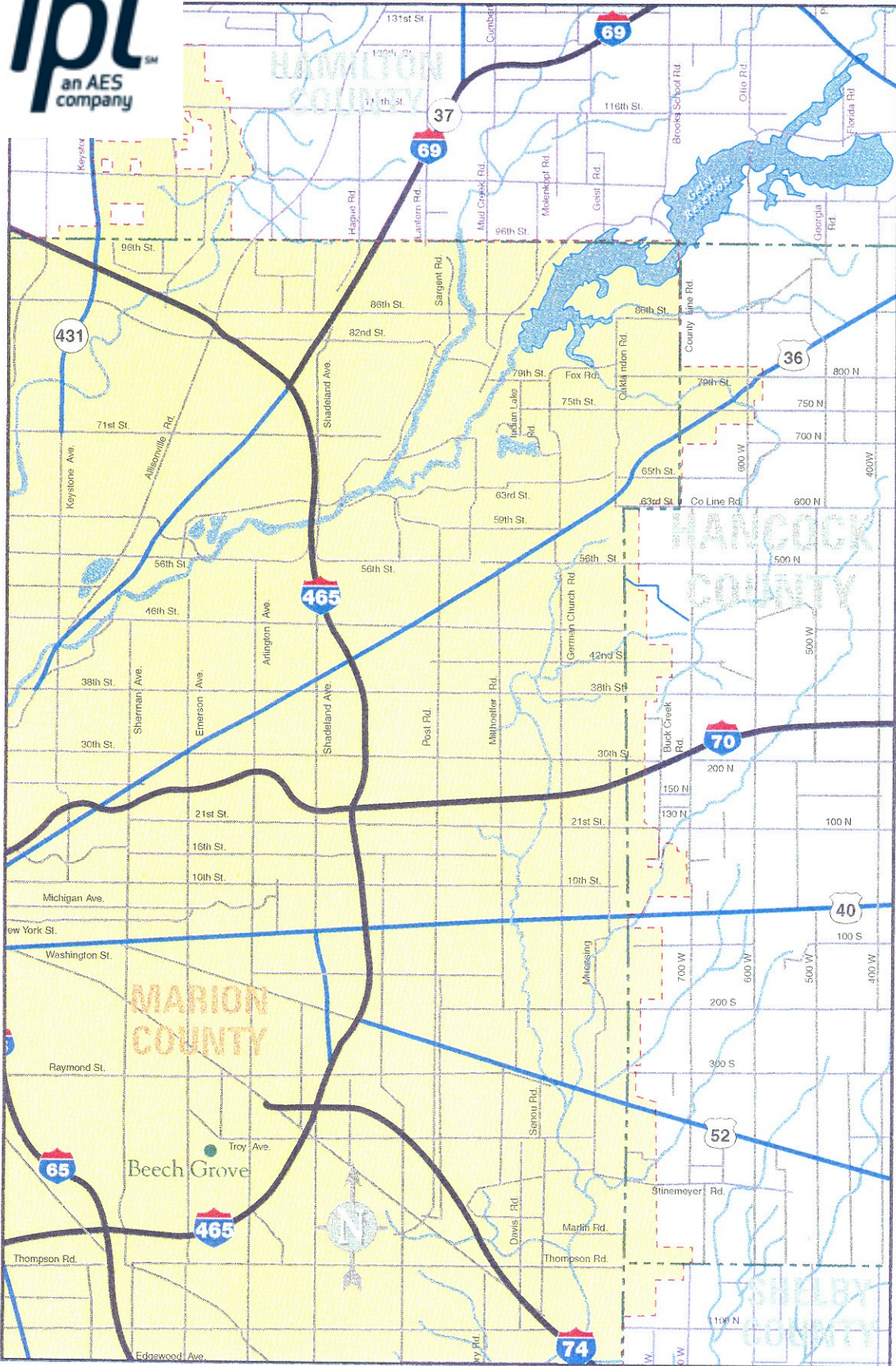
Designates IPL Service Territory



Hamilton County



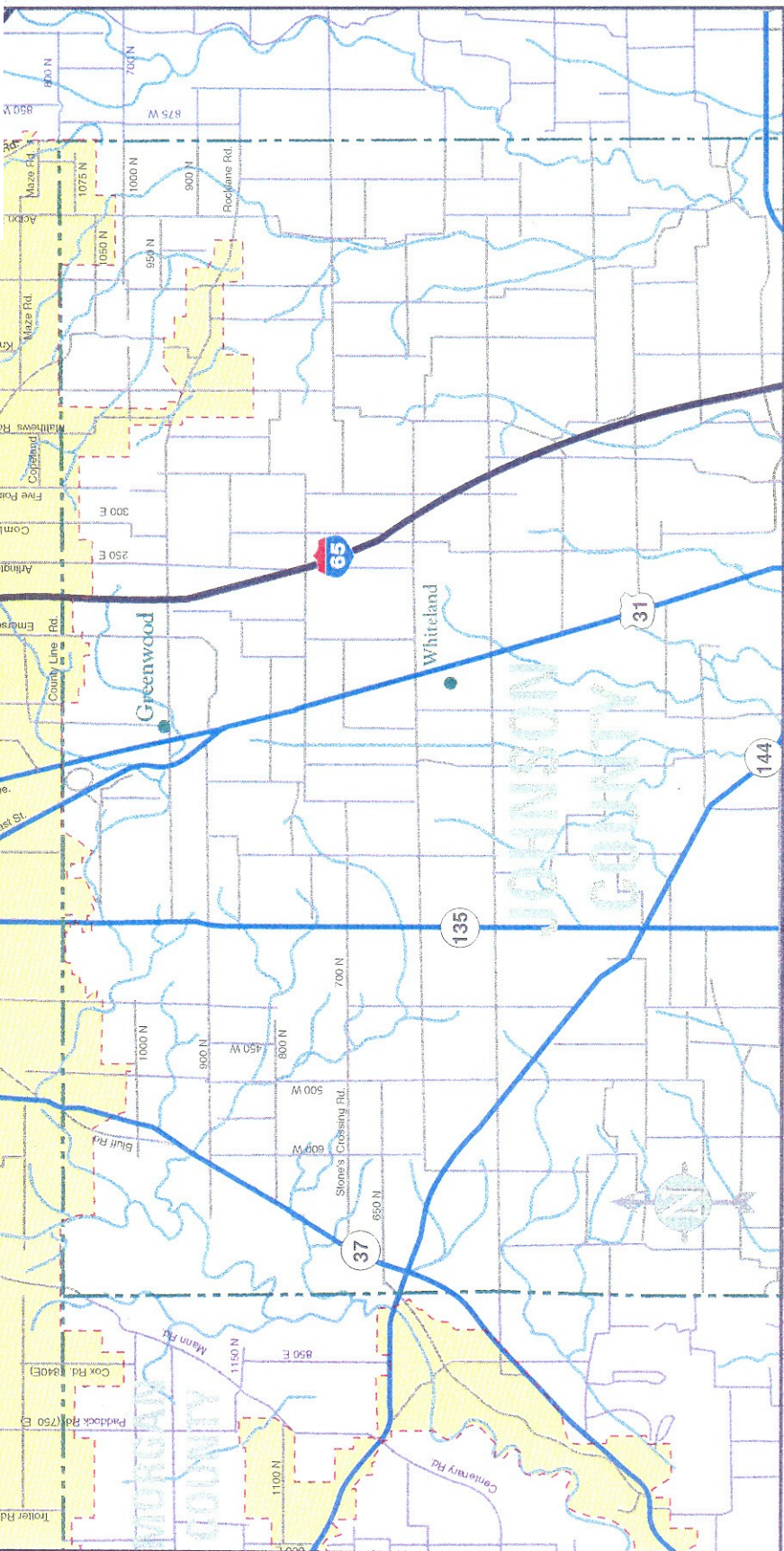
Designates IPL Service Territory



Hancock & Shelby Counties



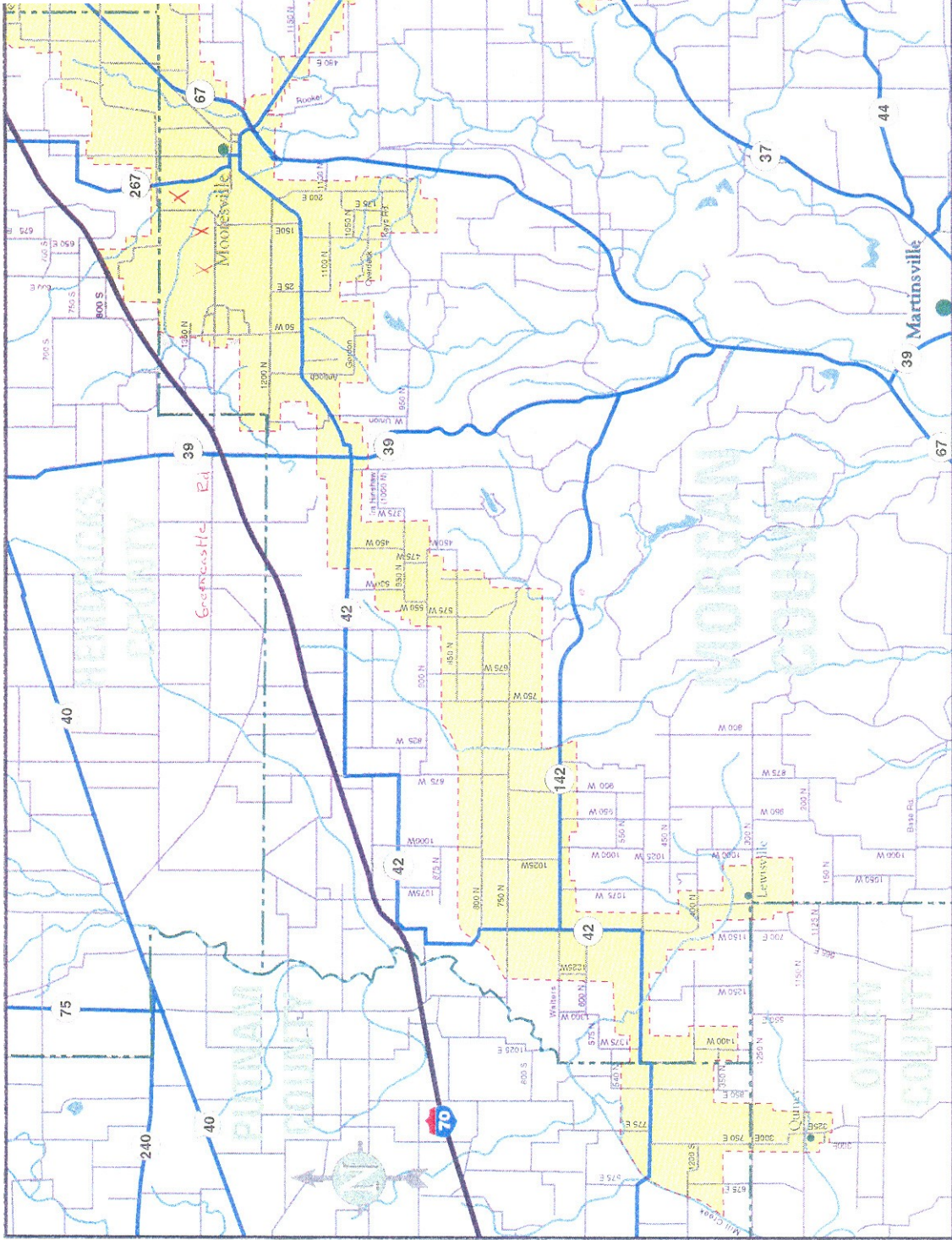
Designates IPL Service Territory



Johnson County



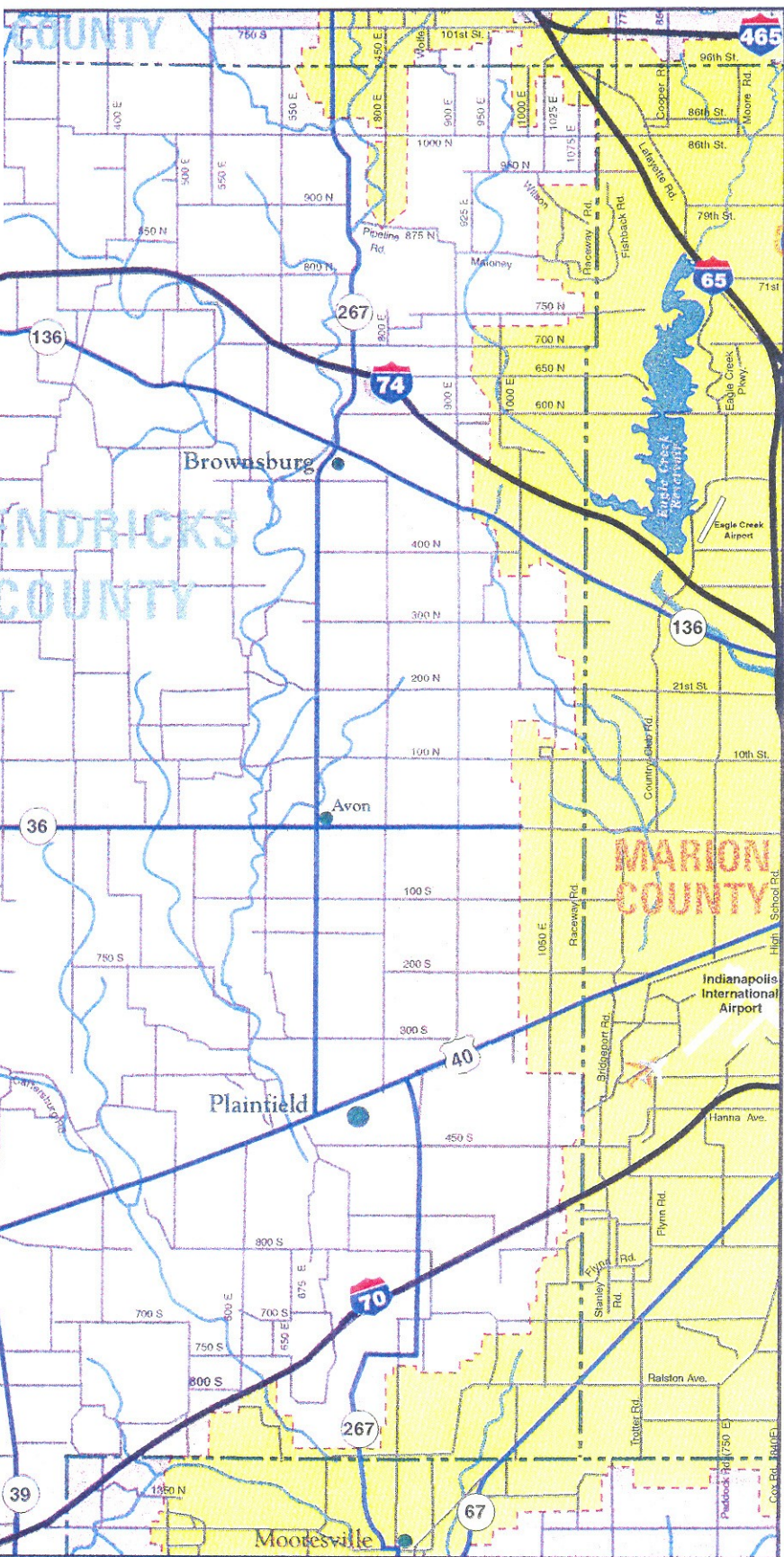
**Designates IPL
Service Territory**



Morgan, Owen & Putnam Counties



Designates IPL Service Territory



Hendricks County



Designates IPL Service Territory