



## What you should know about trees and your electric service

Trees may seem to be everywhere, but in reality there are some locations where trees should not be found. A tree's location is a very important consideration when it comes to providing reliable electric service. Misplaced or improperly maintained trees often cause power outages during severe weather and can be dangerous when branches come in contact with power lines.

At AES Indiana, we're committed to preserving the diversity and beauty of our region's existing trees and encouraging the establishment of new trees for future generations to enjoy. We also constantly strive to prevent tree-related power outages. As a homeowner, there are ways you can help.

The best way to ensure you plant the right tree in the right place is to plan ahead. Here are some simple guidelines that can help protect you and your property's value and prevent needless power outages at the same time.

## Did you know?

AES Indiana offers **free wood mulch** to our customers as part of our ongoing line clearing program. To learn more, call us at **317-261-8128**.



## Find out more

Line Clearance Office – **317-261-8128**

*For information about AES Indiana's line clearance program*

AES Indiana Customer Service: – **317-261-8222**

*For general customer information and billing inquiries*

To Report a Power Outage Day or Night: – **317-261-8111**

[www.aesindiana.com/righttree](http://www.aesindiana.com/righttree)



**Know what's below.  
Call before you dig.**

## Call Before You Dig Hotline

**811 or 800-382-5544**

(To submit a utility line locate request, 24/7)



[www.aesindiana.com](http://www.aesindiana.com)



**aes** Indiana



# Right tree Right place

[aesindiana.com/righttree](http://aesindiana.com/righttree)

Visit the National Arbor Day Foundation for information to help you choose the right tree for your space. Remember, you cannot plant trees on utility right-of-ways. [www.ArborDay.org](http://www.ArborDay.org)

**aes** Indiana

## 1 Select the right tree

While the tree's appearance is important, some trees are better suited than others for planting near power lines, based on their maximum height at maturity and pattern of growth.

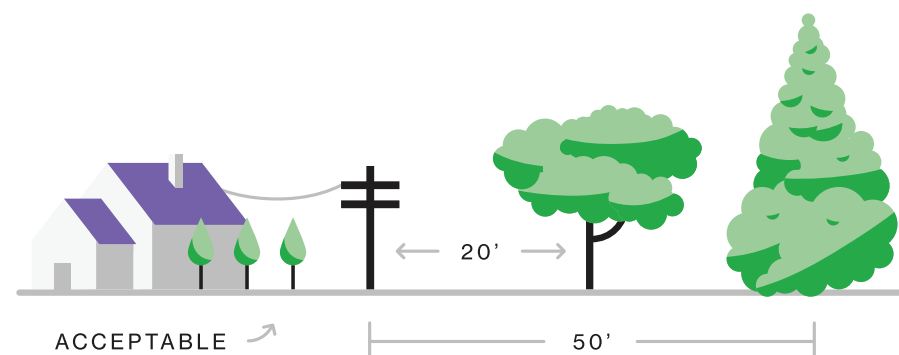
To help you select the right tree for the right place, visit [aesindiana.com](http://aesindiana.com) for a list of compatible trees and shrubs that that are acceptable to plant anywhere overhead distribution lines exist.

AES Indiana can also provide free information about whether that tree is a good match for the location you've selected. Just call us at 317-261-8124 and we'll be happy to give you helpful information about tree planting and power lines.

Remember, all trees planted on transmission line easements must be approved by AES Indiana.

## Plan your plant

Only trees with a mature height of less than 20 feet can safely be planted under or near power lines - all taller growing trees should be planted at least 50 feet away from overhead lines.



## 2 Choose the right spot

Where you plant is just as important as what you plant. Since no tree is perfect in every location, trees should be carefully placed to avoid the chance of a power outage or damage to your home or property. Be sure to avoid the following locations when you plant:

### Overhead distribution power lines

No matter how big or small the tree, call us to see how far it should be planted from overhead lines.

### Underground power lines and transformer boxes

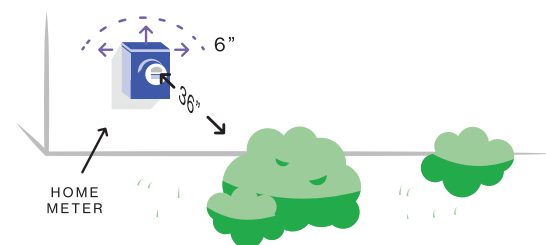
Be sure to locate and keep a proper distance from underground power lines and at least 10 feet from transformer boxes on your property. Call the national "Call Before You Dig" number, 811, at least two business days before planting. A representative will identify and mark the location of existing underground lines on your property.

### Utility easements

AES Indiana power lines are placed in street rights-of-way, easements designated when neighborhood lots were platted and utility easements that have been granted to AES Indiana.

To provide you with reliable electric service, we need to operate and maintain the power lines.

AES Indiana is required to clear trees and shrubs that may interfere with the lines and threaten the safety and reliability of the electrical system. Customers should avoid planting trees on utility easements.



## Trees for Indy Campaign

At AES Indiana, we're doing our part to ensure that new trees are continually being planted for future generations to enjoy. The Trees for Indy program, a partnership of AES Indiana, Keep Indianapolis Beautiful, Inc., Downtown Indy and DPW/Indy Parks, has planted more than 15,000 trees in the Indianapolis area since 1990. Along with planting and caring for this significant number of public trees in Indianapolis and the surrounding areas, the program's partners educate the public about the importance of trees to our quality of life, and the importance of planting the right tree in the right place.

- AES Indiana provides the funding for the trees and promotes the program to our city and its residents.
- DPW/Indy Parks and Keep Indianapolis Beautiful, Inc. manage the community tree plantings by providing the staff and coordinating the efforts of volunteers to plant and maintain the trees – ensuring viability and survivability.

If your neighborhood would like to apply for a tree planting project, visit the Keep Indianapolis Beautiful website at [kibi.org](http://kibi.org).

